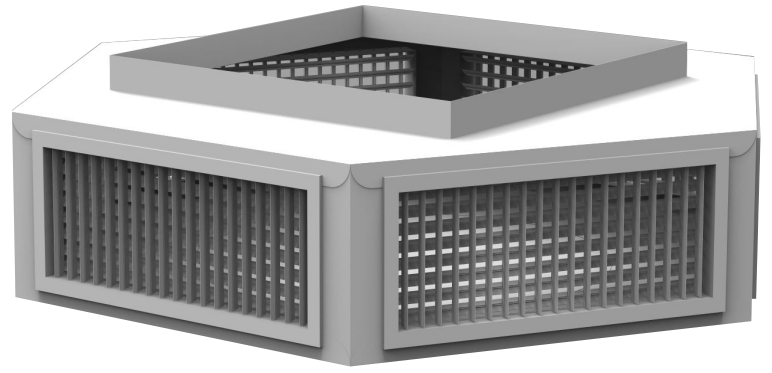


TDAVI-6 VHI MODEL

GALVANNEAL DROP BOX 6 WAY DOUBLE DEFLECTION GRILLE, SQUARE NECK FOR 8000 CFM

- Specially designed to be applied on the air condition distribution on industrial warehouses and shopping malls.
- Connected directly to the output branches of the high-speed ducts.
- Its great height installation and near the columns reduce the interference with the lifts and any other equipment's for material handling.
- Easily removable to allow the occasional movement of heavy equipment



New design
! SAME PERFORMANCE
BEST PRICES !

CONSTRUCTION:

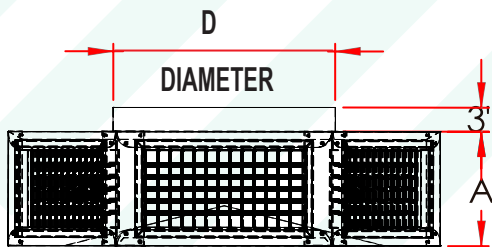
Galvanneal steel structure with VHI model.

The inside of the cabinet is covered with insulating and acoustical material properly treated to avoid its erosion. Has a **CONE DEFLECTOR** that diverts the air towards the diffusers for a higher performance.

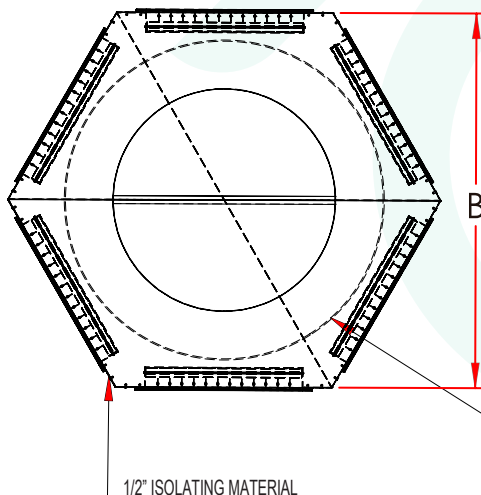
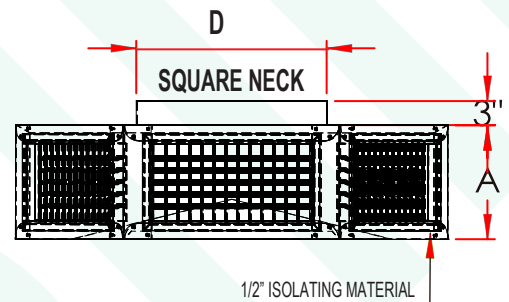
FINISH:

Standard white Anodic acrylic paint. Other colors available.

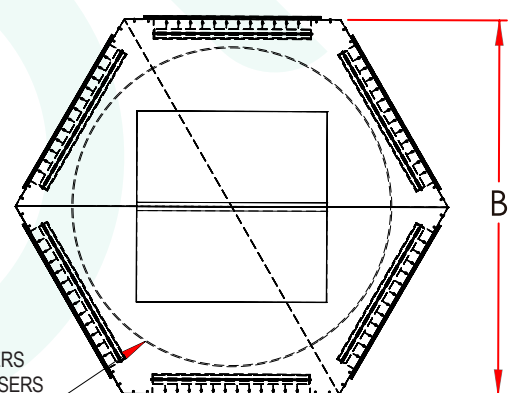
Dimensional Data



SIDE VIEW



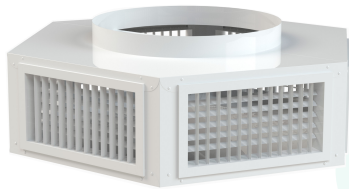
TOP VIEW



*CONE DEFLECTOR THAT DIVERS
THE AIR TOWARDS THE DUFFUSERS
FOR A HIGHER PERFORMANCE

TDAVI-6 VHI MODEL

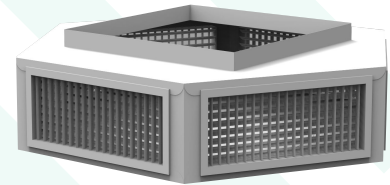
DIMENSIONS AND PERFORMANCE



**TDAVI-6CR
VHI-15**

MODEL	DIAMETER	A HIGH	B WIDTH	GRID SIZE	NOMINAL PCM	TONS	THROW ^{150, 100, 50 fpm}	NC	VEL. PRES. In H ₂ O	TOTAL PRES. In H ₂ O @ deflection
TDAVI-6CR 17.5	28"	12"	47"	20"X 8"	7,000	17.5	29-40-54	27	0.0539	0.0506
TDAVI-6CR 20	28"	14.5"	47"	20"X 10"	8,000	20	32-43-61	26	0.054	0.057
TDAVI-6CR 22.5	28"	16"	47"	20"X 12"	9,000	22.5	35-48-66	27	0.0436	0.0551
TDAVI-6CR 25	28"	16"	47"	20"X 12"	10,000	25	38-51-71	28	0.0547	0.0559
TDAVI-6CR 30	32"	16"	64"	30"X 12"	12,000	30	41-51-77	28	0.079	0.086
TDAVI-6CR 40	40"	16"	74.5"	36"X 12"	16,000	40	46-61-86	30	0.0577	0.0721
TDAVI-6CR 50	40"	19"	74.5"	36"X 15"	20,000	50	50-65-93	35	0.0726	0.0864
TDAVI-6CR 77.5	52"	19"	81.5"	40"X 15"	31,000	77.5	79-94-123	39	0.092	0.141
TDAVI-6CR 85	54"	19"	99"	50"X 15"	34,000	85	83-98-128	40	0.095	0.148

MODEL	DIAMETER	A HIGH	B WIDTH	GRID SIZE	NOMINAL PCM	TONS	THROW ^{150, 100, 50 fpm}	NC	VEL. PRES. In H ₂ O	TOTAL PRES. In H ₂ O @ deflection
TDAVI-6CC 17.5	24"	12"	47"	20"X 8"	7,000	17.5	29-40-54	27	0.0539	0.0506
TDAVI-6CC 20	24"	14.5"	47"	20"X 10"	8,000	20	32-43-61	26	0.054	0.057
TDAVI-6CC 22.5	24"	16"	47"	20"X 12"	9,000	22.5	35-48-66	27	0.0436	0.0551
TDAVI-6CC 25	24"	16"	47"	20"X 12"	10,000	25	38-51-71	28	0.0547	0.0559
TDAVI-6CC 30	32"	16"	64"	30"X 12"	12,000	30	41-51-77	28	0.079	0.086
TDAVI-6CC 40	36"	16"	74.5"	36"X 12"	16,000	40	46-61-86	30	0.0577	0.0721
TDAVI-6CC 50	36"	19"	74.5"	36"X 15"	20,000	50	50-65-93	35	0.0726	0.0864
TDAVI-6CC 77.5	46"	19"	81.5"	40"X 15"	31,000	77.5	79-94-123	39	0.092	0.141
TDAVI-6CC 85	48"	19"	99"	50"X 15"	34,000	85	83-98-128	40	0.095	0.148



**TDAVI-6CC
VHI-15**

NOTES:

Throws are based on terminal speeds (Vt) of 150, 100 and 50 Feet / Min. (Ppm) with the help of a ceiling or false ceiling that allows the "Coanda Effect", under isothermal conditions and zero deflection.